

**Go**Safe

**Quick Solution for File Security**

# **File Encryption User Guide for Windows**

**SENSELOCK**  
Reliable Professional Partner

## Contact

Marketing By

### **Senselock Software Technology Co., Ltd.**

**Tel:** +86-10-82642305

**Email:** info@senselock.com

**Web:** [www.senselock.com](http://www.senselock.com)

**Add:** Suite 1706, Culture Square,  
Jia 59 ZhongGuanCun Street, Haidian District,  
Beijing 100872,  
P.R. China.

For details of **GoSafe** please visit: [www.senselock.com](http://www.senselock.com)

Developed By

### **Innovative Matrix Softech Pvt. Ltd.**

**Email:** support@isohelpline.com

**Web:** [www.SoftwareFileProtection.com](http://www.SoftwareFileProtection.com)

**Add:** 7005, 7th Floor, Emerald House,  
Sarajini Devi Road, Next to Parklane Hotel, Near State bank of Mysore, Paradise Circle, Hyderabad /  
Secunderabad- 500 003 India

For details of **GoSafe** please visit: <http://softwarefileprotection.com/gosafe>

# Contents

<b>Contact</b> .....	<b>2</b>
<b>Contents</b> .....	<b>3</b>
<b>License Agreement</b> .....	<b>5</b>
<b>What is GoSafe</b> .....	<b>8</b>
<b>Versions</b> .....	<b>9</b>
<b>Overview</b> .....	<b>10</b>
<b>Windows Installation</b> .....	<b>11</b>
<b>Algorithm &amp; Versions</b> .....	<b>13</b>
<b>Run GoSafe as an Administrator (Vista User)</b> .....	<b>14</b>
<b>How to Use</b> .....	<b>15</b>
<b>Encrypting and Decrypting Files</b> .....	<b>15</b>
<b>GoSafe SF and GoSafe AES SF</b> .....	<b>15</b>
<b>GoSafe NF and GoSafe AES NF</b> .....	<b>15</b>
<b>How GoSafe Works on Various File Formats</b> .....	<b>17</b>
<b>Text Files</b> .....	<b>17</b>
<b>.txt file:</b> .....	<b>17</b>
<b>.docx file:</b> .....	<b>18</b>
<b>.doc file:</b> .....	<b>19</b>
<b>.xps file:</b> .....	<b>20</b>
<b>.pdf file:</b> .....	<b>21</b>
<b>.rtf file:</b> .....	<b>22</b>
<b>Excel (Spread sheet) Files:</b> .....	<b>23</b>
<b>.xlsm file:</b> .....	<b>23</b>
<b>.xlsx file:</b> .....	<b>24</b>
<b>.xls file:</b> .....	<b>25</b>

<b>Presentation Files:</b> .....	<b>26</b>
<b>.ppt file:</b> .....	<b>26</b>
<b>.pptx file:</b> .....	<b>27</b>
<b>.pptm file:</b> .....	<b>28</b>
<b>Image files:</b> .....	<b>29</b>
<b>.Jpg file:</b> .....	<b>29</b>
<b>.bmp file:</b> .....	<b>30</b>
<b>.gif file:</b> .....	<b>31</b>
<b>.ico file:</b> .....	<b>32</b>
<b>.png file:</b> .....	<b>33</b>
<b>Movie files:</b> .....	<b>34</b>
<b>.wma/.wmv file:</b> .....	<b>34</b>
<b>Sound files:</b> .....	<b>35</b>
<b>.mp3 file:</b> .....	<b>35</b>
<b>Archive files:</b> .....	<b>36</b>
<b>.rar file:</b> .....	<b>36</b>
<b>.zip file:</b> .....	<b>37</b>
<b>Errors &amp; Resolutions</b> .....	<b>38</b>

# License Agreement

---

**Note: You cannot share the product referred herein. You cannot sale or resale the product referred herein.**

**IMPORTANT** - READ CAREFULLY BEFORE DOWNLOADING, INSTALLING OR COPYING TO YOUR COMPUTER ANY FILE(S) CONTAINED HEREWITH.

THE FILE(S) AND OTHER INFORMATION PROVIDED HEREWITH ARE COPYRIGHTED. BY DOWNLOADING ANY FILE PROVIDED HEREWITH TO YOUR COMPUTER, YOU ARE ACCEPTING AND AGREEING TO THE TERMS OF THIS LICENSE AGREEMENT. IF YOU ARE NOT WILLING TO BE BOUND BY THE TERMS OF THIS LICENSE AGREEMENT, PRIOR TO DOWNLOADING OR COPYING ANY FILE(S) TO YOUR COMPUTER, YOU MUST DECLINE ACCESS TO SUCH MATERIALS.

**1. GRANT OF LICENSE:** Subject to the provisions contained herein and to the payment of all applicable fees, the Innovative Matrix Softech Private Limited grants you a non-exclusive, non-transferable license to the materials contained herewith (the "Product"). Your licensed rights to the Product are limited to the following:

(a) This License Agreement does not convey to you an interest in or to the Product, but only a limited right of use revocable in accordance with the terms of this License Agreement.

(b) You may install one copy of the Product on, and permit access to it by, a single computer owned, leased or otherwise controlled by you. In the event that computer becomes dysfunctional, such that you are unable to access the Product, you may transfer the Product to another computer, provided that the Product is removed from the computer from which it is transferred and the use of the Product on the replacement computer otherwise complies with the terms of this Agreement. Neither concurrent use on two or more computers nor use in a local area network or other network is permitted. You shall not print, merge, adapt, translate, modify, rent, lease, sell, sublicense, assign or otherwise transfer any of the Product, or remove any proprietary notice or label appearing on any of the Product. You may copy the Product only for backup purposes.

(c) You acknowledge and agree that the Product is proprietary to the Copyright holder, INNOVATIVE MATRIX SOFTECH PRIVATE LIMITED, and is protected under Indian copyright law and international copyright treaties. You further acknowledge and agree that all rights, title and interest in and to the Product, including all intellectual property rights, are and shall remain with Innovative Matrix Softech Private Limited.

(d) You shall provide INNOVATIVE MATRIX SOFTECH PRIVATE LIMITED or any designee of INNOVATIVE MATRIX SOFTECH PRIVATE LIMITED with all information necessary to assure compliance with the terms of this Agreement. In the event you are not in compliance with the terms of this Agreement through the actions of unrelated third parties, you shall use your best efforts to cooperate with INNOVATIVE MATRIX SOFTECH PRIVATE LIMITED and any of its designees to assure compliance.

## 2. LIMITED WARRANTY:

(a) INNOVATIVE MATRIX SOFTECH PRIVATE LIMITED warrants for your benefit alone that, unless disclosed in the Product to the contrary, INNOVATIVE MATRIX SOFTECH PRIVATE LIMITED can license the Product and all copyright and trademarks related thereto or therein.

(b) THE EXPRESS WARRANTIES SET FORTH IN THIS SECTION 2 CONSTITUTE THE ONLY WARRANTIES WITH RESPECT TO THE PRODUCT AND INNOVATIVE MATRIX SOFTECH PRIVATE LIMITED MAKES NO OTHER REPRESENTATION OR WARRANTY OR CONDITION OF ANY KIND, WHETHER EXPRESS OR IMPLIED (EITHER IN FACT OR BY OPERATION OF LAW) WITH RESPECT TO ANY OF THE PRODUCT, INCLUDING, WITHOUT LIMITATION, WITH RESPECT TO THE SUFFICIENCY, ACCURACY OR UTILIZATION OF, OR ANY INFORMATION OR OPINION CONTAINED OR REFLECTED IN, ANY OF THE PRODUCT. INNOVATIVE MATRIX SOFTECH PRIVATE LIMITED EXPRESSLY DISCLAIMS ALL WARRANTIES OR CONDITIONS OF MERCHANTABILITY OR FITNESS FOR A PARTICULAR PURPOSE. NO OFFICER, DIRECTOR, EMPLOYEE, MEMBER, AGENT, REPRESENTATIVE OR PUBLISHER OF THE COPYRIGHT HOLDER IS AUTHORIZED TO MAKE ANY MODIFICATION, EXTENSION, OR ADDITION TO THIS LIMITED WARRANTY.

**3. INDEMNIFICATION:** INNOVATIVE MATRIX SOFTECH PRIVATE LIMITED, any agent, representative, publisher or distributor of the Product, or any of their respective directors, officers, employees, agents, representatives or members (the "INNOVATIVE MATRIX SOFTECH PRIVATE LIMITED Indemnified Parties") shall have no liability for, and you shall defend, indemnify and hold each of the INNOVATIVE MATRIX SOFTECH PRIVATE LIMITED Indemnified Parties harmless from and against, any claim, loss, demand, liability, obligation and expenses (including reasonable attorneys' fees) based upon or arising out of any injury or damage, or any product liability claim, including but not limited to, any personal or bodily injury or property damage, arising out of, pertaining to, or resulting in any way from, the use or possession of any of the Product by you and/or any of your directors, officers, employees, representatives, agents or contractors.

## 4. LIMITATION OF LIABILITY:

(a) You acknowledge that each of INNOVATIVE MATRIX SOFTECH PRIVATE LIMITED's obligations and liabilities with respect to the Product are exhaustively defined in this Agreement. You are responsible for the consequences of any use of any of the Product (whether or not such use was consistent with the license granted hereunder) created therefrom. Whether or not INNOVATIVE MATRIX SOFTECH PRIVATE LIMITED has been advised of their possibility, neither INNOVATIVE MATRIX SOFTECH PRIVATE LIMITED nor any of its representatives or agents, directors, officers, employees, or members, shall be liable, whether under contract, tort (including negligence) or otherwise, for any indirect, special, punitive, incidental or consequential loss, damage, cost or expense of any kind whatsoever and howsoever caused, that may be suffered by you or any of your directors, officers, employees, agents, representatives or contractors or any third party.

(b) If at any time an allegation of infringement of any rights of any third party is made, or in INNOVATIVE MATRIX SOFTECH PRIVATE LIMITED's opinion is likely to be made, with respect to any of the Product, INNOVATIVE MATRIX SOFTECH PRIVATE LIMITED may, at its option and at its own expense (i) obtain for you the right to continue using the Product, (ii) modify or replace the Product or any portion thereof so as to avoid any such claim of infringements, or (iii) refund to you the License Fee. INNOVATIVE MATRIX SOFTECH PRIVATE LIMITED shall have no liability to you if any claim of infringement would have been avoided except for your refusal to use any modified or replacement Product supplied or offered to be supplied pursuant to this Section 4(b) or to otherwise cease using the Product. Notwithstanding anything contained in this Agreement, and except as set forth in Section 4(b) hereof, INNOVATIVE MATRIX SOFTECH PRIVATE LIMITED's liability to you for damages pursuant to this Section 4(b), if any, shall not exceed the amounts of the License Fee paid by you for the Product subject to any such claim.

(c) Section 4(b) state the entire liability of INNOVATIVE MATRIX SOFTECH PRIVATE LIMITED with respect to the infringement or alleged infringement of any third party rights of any kind whatsoever by any of the Product.

**5. TERMINATION:** This Agreement may be terminated immediately by INNOVATIVE MATRIX SOFTECH PRIVATE LIMITED upon breach of any provision of this Agreement by you. Upon any termination of this Agreement, you shall immediately discontinue the use of the Product and shall within ten (10) days either return file(s) on diskette(s), if any, to INNOVATIVE MATRIX SOFTECH PRIVATE LIMITED or certify in writing to INNOVATIVE MATRIX SOFTECH PRIVATE LIMITED that the Product has been deleted from your computer and is eliminated from your premises.

**6. GOVERNING LAW; ATTORNEY'S FEES:** This Agreement shall be governed by the laws of the Republic of India without reference to its conflict of laws and provisions and you further consent to jurisdiction by the state and federal courts sitting in the state of Andhra Pradesh, India.

**7. MISCELLANEOUS:** This Agreement constitutes the complete and exclusive agreement between INNOVATIVE MATRIX SOFTECH PRIVATE LIMITED and you with respect to the subject matter hereof, and supersedes all prior oral or written understandings, communications or agreements not specifically incorporated herein. This Agreement may not be modified except in writing duly signed by an authorized representative of INNOVATIVE MATRIX SOFTECH PRIVATE LIMITED and you. If any provision of this Agreement is held to be unenforceable for any reason, such provision shall be reformed only to the extent necessary to make it enforceable, and such decision shall not affect the enforceability (i) of such provision under other circumstances, or (ii) of the remaining provisions hereof under all circumstances. Headings shall not be considered in interpreting the Agreement.

**8. EXPORT:** You cannot load or export or re-export any of the Product or any underlying information or technology without prior consent from the Innovative Matrix Softech Private Limited. You may not load or export or re-export any of the Product or any underlying information or technology except in full compliance with all applicable laws of republic of India and other applicable laws and regulations.

9. By agreeing to this license agreement, you also agree to general terms and conditions given on our website [www.isohepline.com](http://www.isohepline.com) (either on home page or product related pages)

**BY ACCESSING THE PRODUCT, YOU ACKNOWLEDGE THAT YOU HAVE READ THE TERMS OF THIS LICENSE AGREEMENT AND AGREE TO BE BOUND BY ITS TERMS.**

## What is GoSafe

**GoSafe** offers you a suit of completely solutions for file protection. It supports single file encryption and mufti-file encryption, it can protect file during online transmission, enclosed as attachment in an email, or saved in local disk.

There are three components in **GoSafe**, File Encryption, Folder Encryption and Envelope Protection. The three components can be used together or function separately.

### File Encryption

GoSafe File Encryption is a GoSafe Key based encryption / decryption security product which allows you to encrypt files and send it to your friend / customer / colleague via electronic transfer systems like email. The other person receiving the file will require another GoSafe Key from the same set to decrypt and use the file.

This provides you security for your data and private information when your data is in transit or in the email as attachment. Any person getting hold of your files will not be able to use them unless he/she has the GoSafe Key from the same set.

### Folder Encryption

GoSafe Folder Encryption program allows you to encrypt files by simply moving / copying them to a designated folder and/or save, open and edit encrypted files directly using suitable editing software [Works well for all major file formats].

GoSafe Folder Encryption supports open the encrypted folder with GoSafe Key in a same set, or with a unique GoSafe Key and not allow file opening from other Keys even from the same set.

### GoSafe Windows Login

GoSafe Windows login is a Windows Credential Provider library and allows you to login to your windows system using GoSafe USB Key.

A tool is provided to record login credentials [login id and password] in the GoSafe USB Key.

## Versions

There are 4 versions for **File Encryption**. You can install one or more depending upon your requirement.

- **GoSafeNF**: The NF stands for New File. This version of GoSafe will create a new file when encrypting or decrypting. This will use our custom algorithm for encryption.
- **GoSafe SF**: The SF stands for Same File. This version of GoSafe will encrypt or decrypt the same file when encrypting or decrypting. This will use our custom algorithm for encryption.  
**Warning:** You must have file backup because if something goes wrong it can corrupt your file and you will loose important data.
- **GoSafe AES NF**: The NF stands for New File. This version of GoSafe will create a new file when encrypting or decrypting. This will use AES algorithm for encryption.
- **GoSafe AES SF**: The SF stands for Same File. This version of GoSafe will encrypt or decrypt the same file when encrypting or decrypting. This will use AES algorithm for encryption.  
**Warning:** You must have file backup because if something goes wrong it can corrupt your file and you will loose important data.

## Overview

**GoSafe** is a GoSafe Key based encryption / decryption security product which allows you to encrypt your files and helps you to protect your important data when you are transferring files online or as an attachment in an email. **GoSafe** is suitable for encryption of all file formats.

During file transfers in online chat programs like Skype, Yahoo Messenger, GTalk and others, it is possible for a hacker to hack your files. It is also not very difficult to hack your email account and download your important file attachments.

To protect your files, one of the best ways is to encrypt them.

Normal encryption and protection techniques use "password" or a "text string" to encrypt and protect file. This password is saved inside the file itself and hence it is very easy to crack such encryptions and get hold of your data.

**GoSafe** uses a secure hardware key to store the encryption key and also uses three other verification keys stored inside GoSafe Key plus a unique hardware serial number of the GoSafe Key. This makes it very safe and can even be used in military communication.

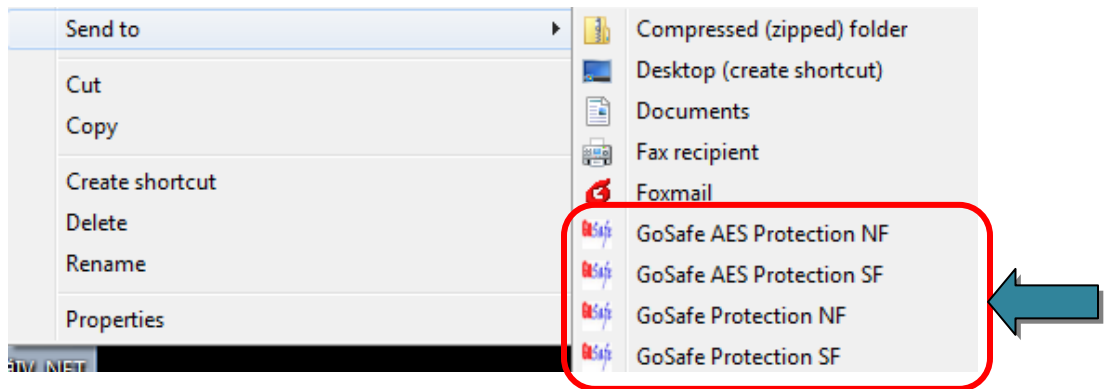
GoSafe Keys are made in set. The other person receiving the file will require another GoSafe Key from the same set to decrypt and use the file. Any person getting hold of your files will not be able to use them unless he/she has the GoSafe Key from the same set.

You can order **GoSafe** with required set of Keys. For example, if you have 500 offices you can order **GoSafe** with 500sets.

You can also expand the GoSafe Key set. We will simply need two Keys from the existing set and KYC [Know Your Customer] form filled along with supportive documents and authorization.

## Windows Installation

After installation, icons are not created on desktop or program files for GoSafe File Encryption instead icons are created in "Send to" menu available on right click.



Installer will create a GoSafe folder inside the Program Files

GoSafe folder contain, GoSafe executable file along with its supportive files and a configuration file(GoSafe.ini)

Go to the **"Start Menu -> GoSafe Suite -> GoSafe File Encryption"** here you will get the configuration file and the GoSafe help file.



## In configuration file:

you can change the language of the software in one of the mentioned language by editing the configuration file (GoSafe.ini) and save on the original file.

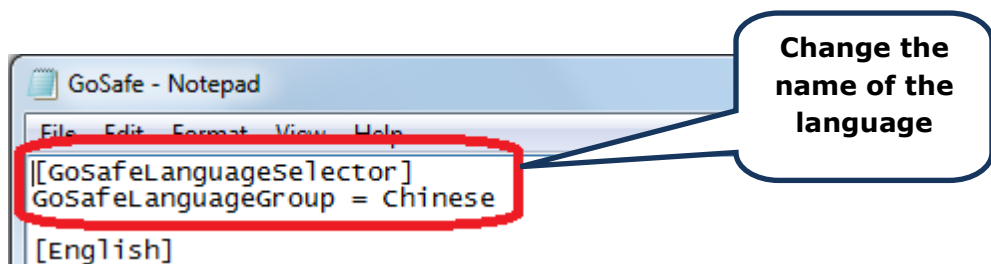
### GoSafeLanguageGroup = "Name of the language"

Chinese

English

Hindi

You can create your own language group, type the text in your preferred language and select the language.



This will change the language of messages only. It has no effect on the contents of the file being encrypted.

## Algorithm & Versions

**GoSafe** comes with different encryption algorithms:

1. Custom IMSPL Algorithm
2. AES Algorithm

And The Programs are made with two different options:

1. SF : This will encrypt or decrypt the same file.
2. NF : This will create a new file upon encryption or decryption.  
Encrypted file will have "\_GoSafe" added to its name while decrypted file will have "\_UnSafe" added to its name.



**Original File**



**Encrypted File**



**Decrypted File**

**GoSafe** is available for free download from website [www.senselock.com](http://www.senselock.com)

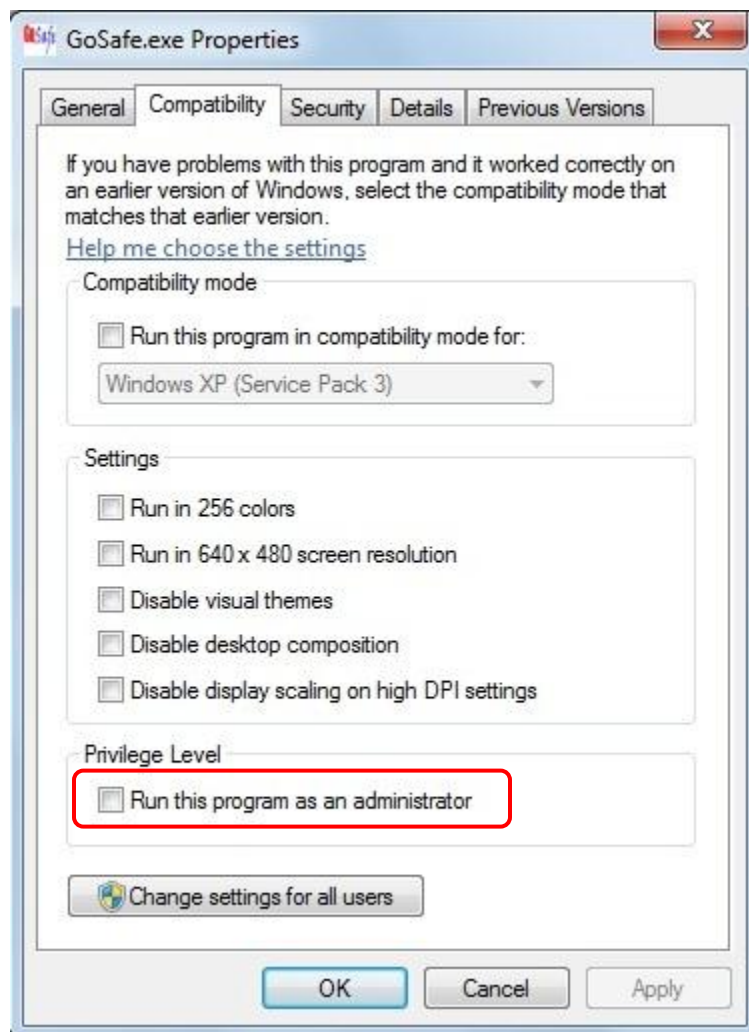
### Notes

For Vista user, it is required to run **GoSafe** as administrator, please refer following steps.

## Run GoSafe as an Administrator (Vista User)

[Required for Windows Vista]

- Go to Installed path
- Select **GoSafe** executable file(.exe)
- Right Click and select "Properties"
- Click on "Compatibility" Tab
- 'Check' on 'Run this program as an administrator'
- Click 'OK'

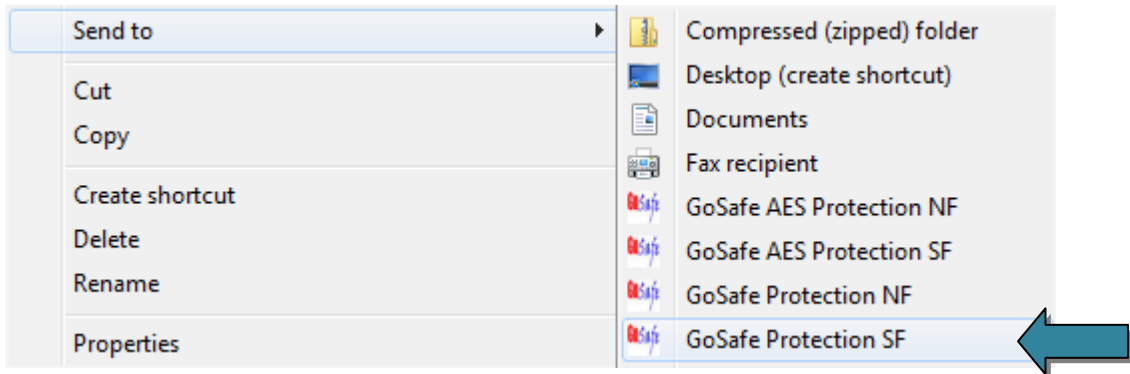


## How to Use

### Encrypting and Decrypting Files

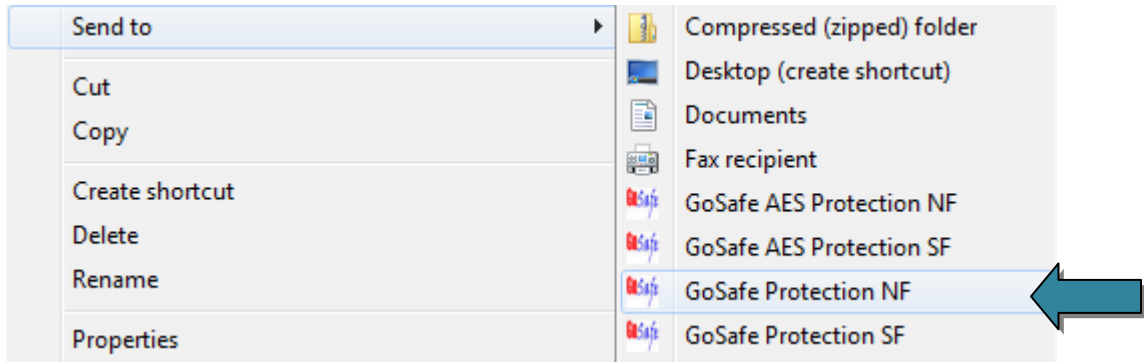
#### GoSafe SF and GoSafe AES SF

- Select the file(s) you want to encrypt or decrypt.
- Right click, hover on '**Send to**', and click '**GoSafe AES SF**'.
- **GoSafe SF** and **GoSafe AES SF** will automatically detect file encryption/decryption status and ask to decrypt if file is already encrypted.
- **GoSafe SF** and **GoSafe AES SF** will encrypt or decrypt with the same file.



#### GoSafe NF and GoSafe AES NF

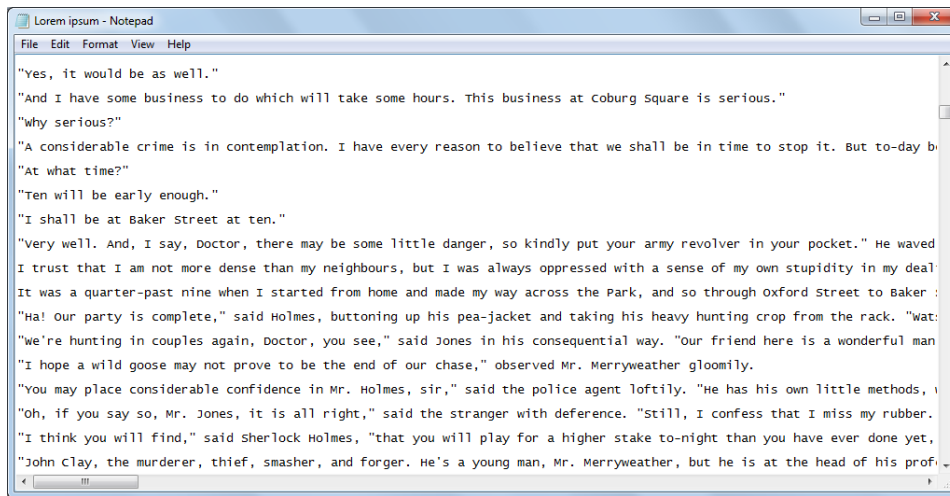
- Select the file(s) you want to encrypt or decrypt.
- Right click, hover on "**Send to**", and click "**GoSafe NF**" or "**GoSafe AES NF**".
- **GoSafe NF/ GoSafe AES NF** will create a new file with "\_GoSafe" at the end of name for an encrypted file and "\_Unsafe" for a decrypted file.
- **GoSafe NF** will automatically detect file encryption/decryption status.



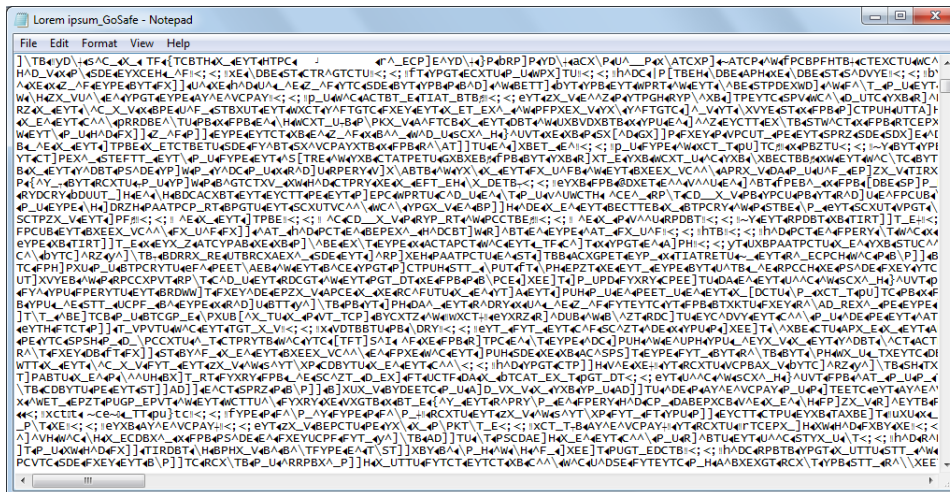
## How GoSafe Works on Various File Formats

### Text Files

#### .txt file:

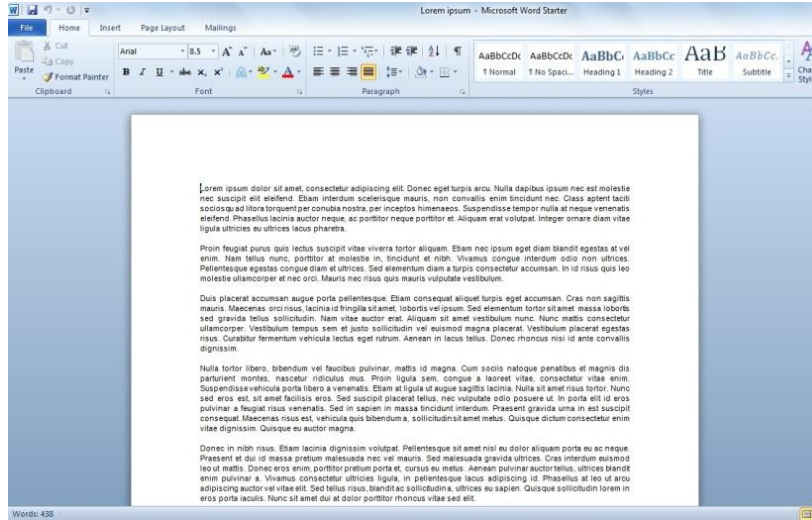


Before Encryption

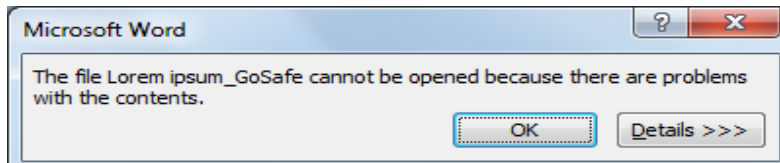
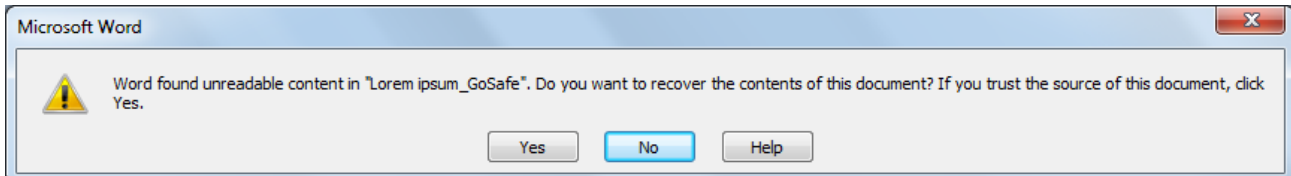
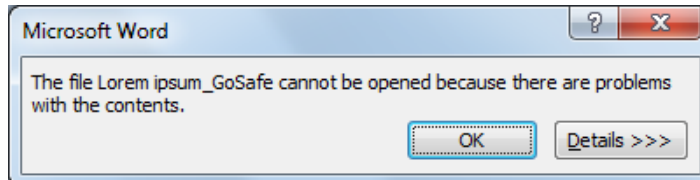


After Encryption

### .docx file:

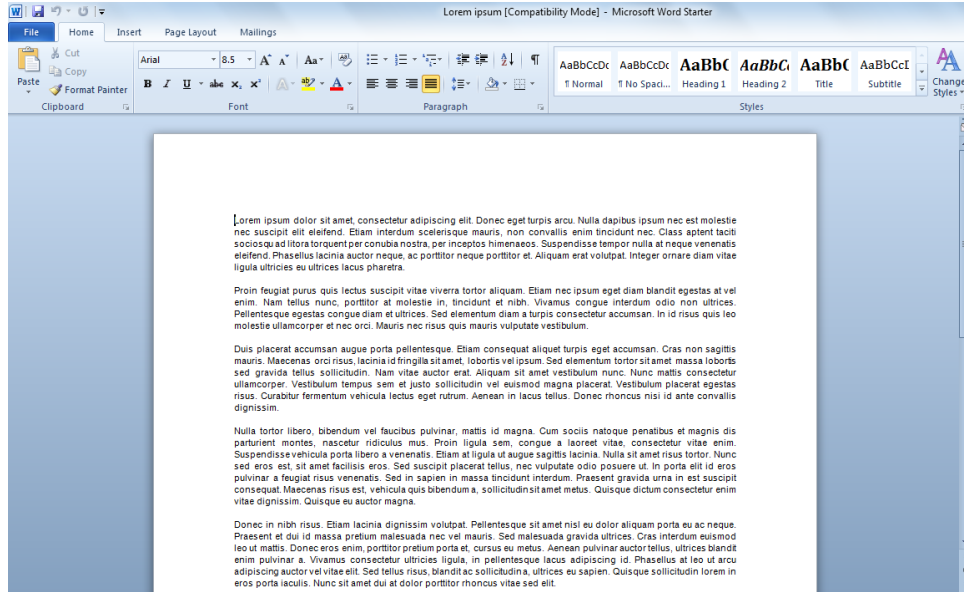


Before Encryption

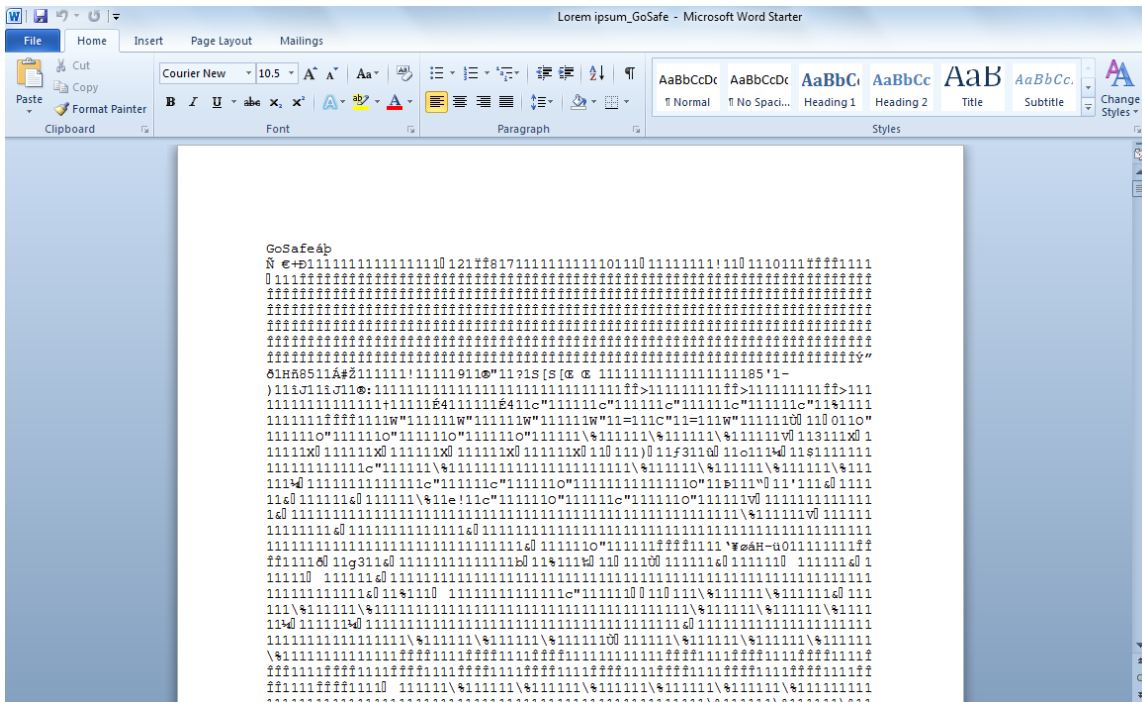


After Encryption [Message sequence in MS Word]

### .doc file:

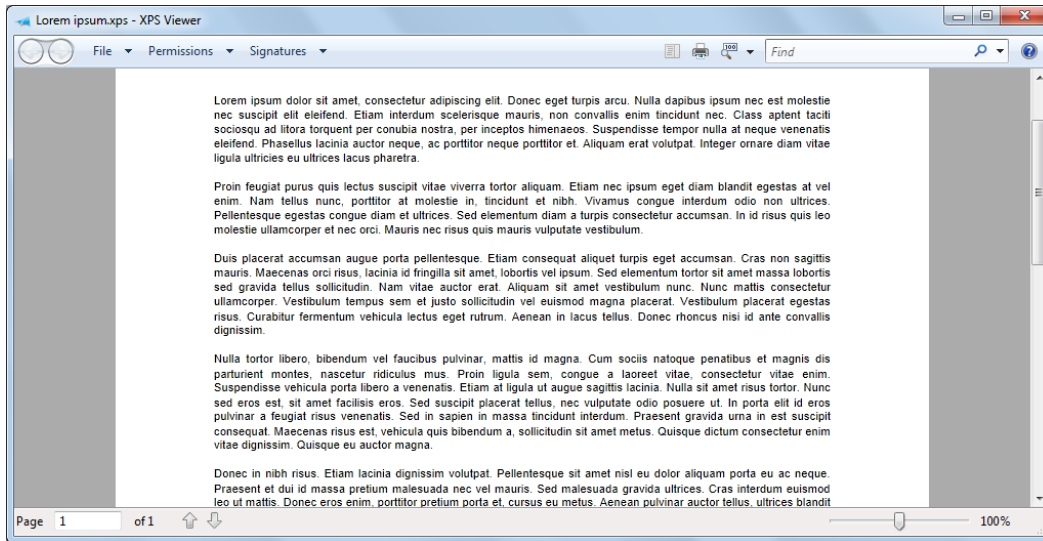


### Before Encryption

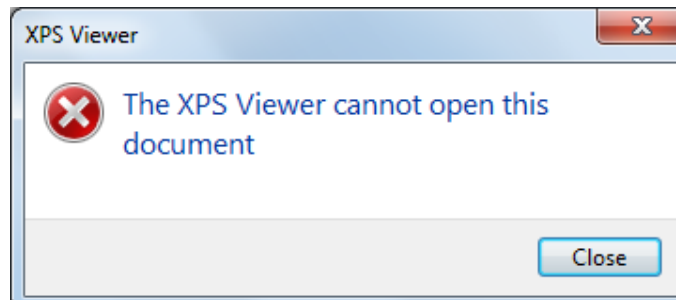


### After Encryption

### .xps file:

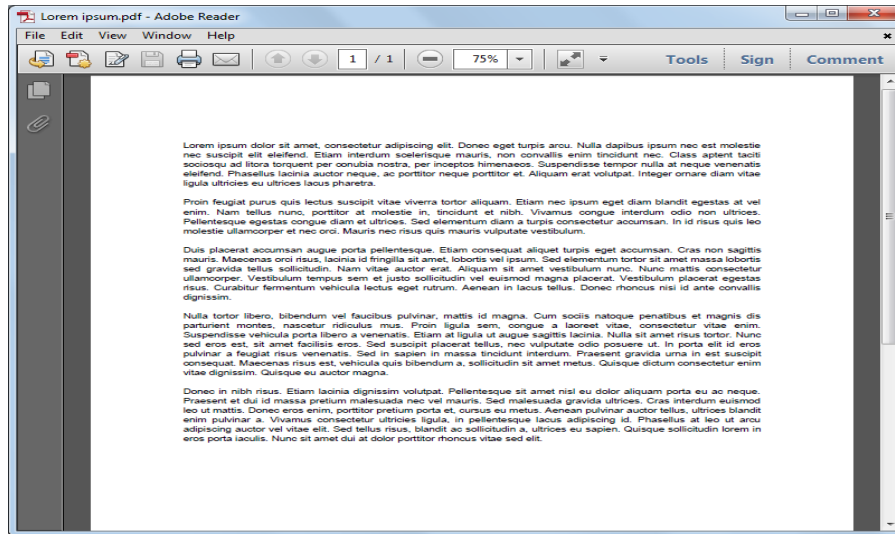


Before Encryption

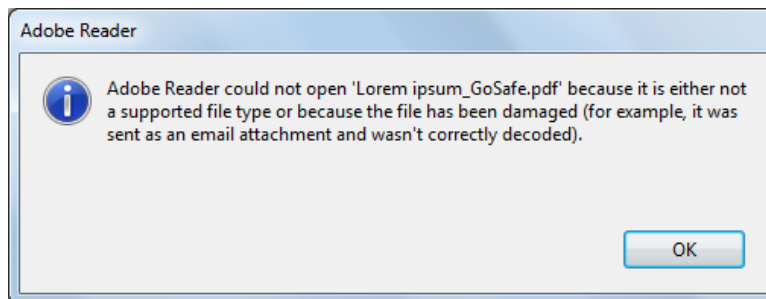


After Encryption

### .pdf file:

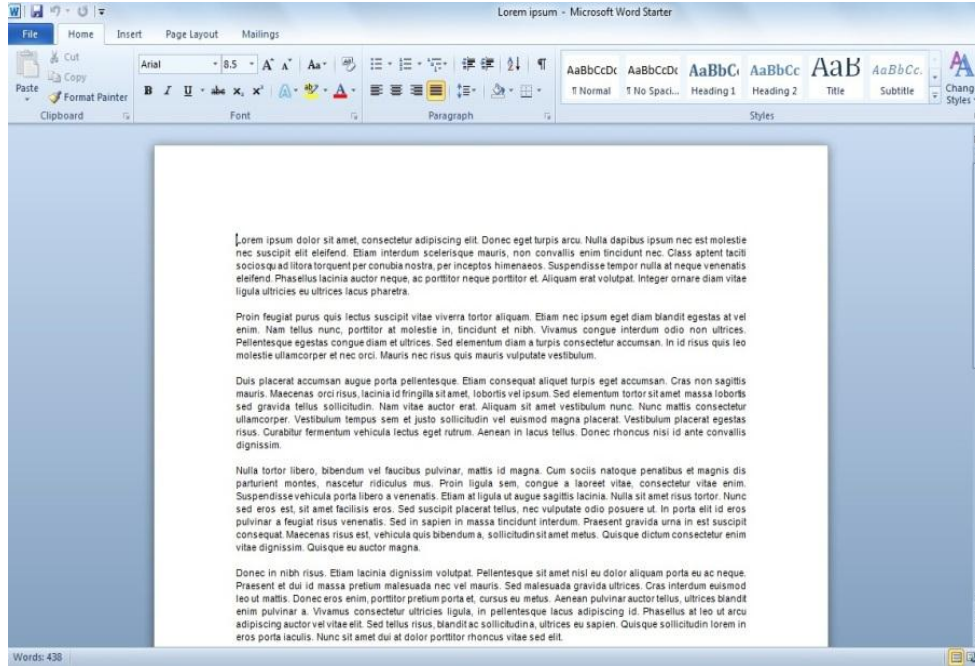


Before Encryption

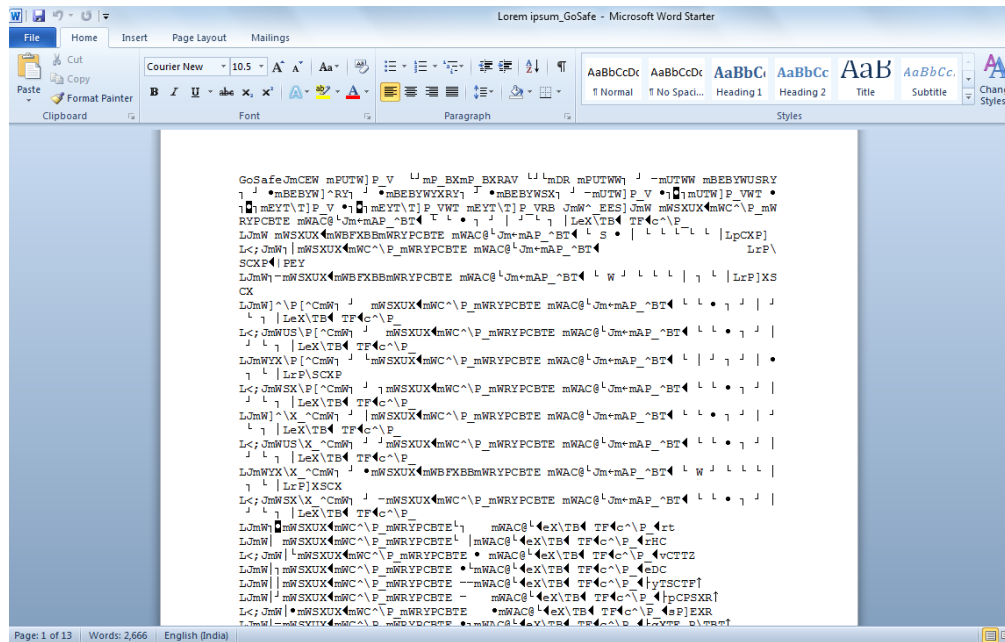


After Encryption

### .rtf file:



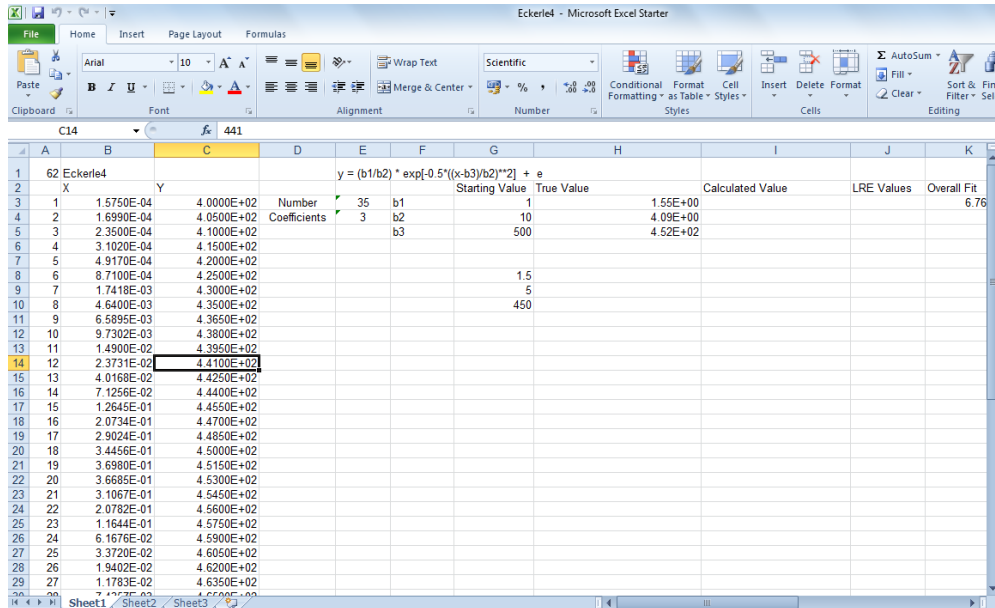
Before Encryption



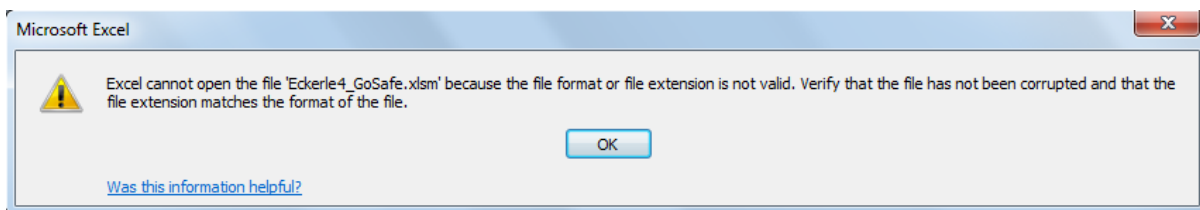
After Encryption

# Excel (Spread sheet) Files:

## .xlsm file:



Before Encryption



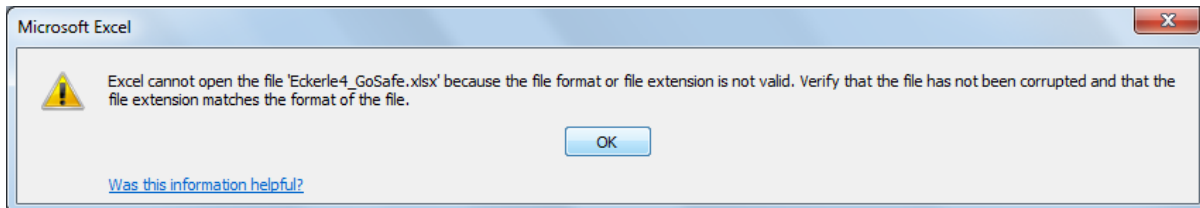
After Encryption

## .xlsx file:

The screenshot shows a Microsoft Excel spreadsheet titled 'Eckerle4 - Microsoft Excel Starter'. The spreadsheet contains a table with columns labeled A through K. The data is as follows:

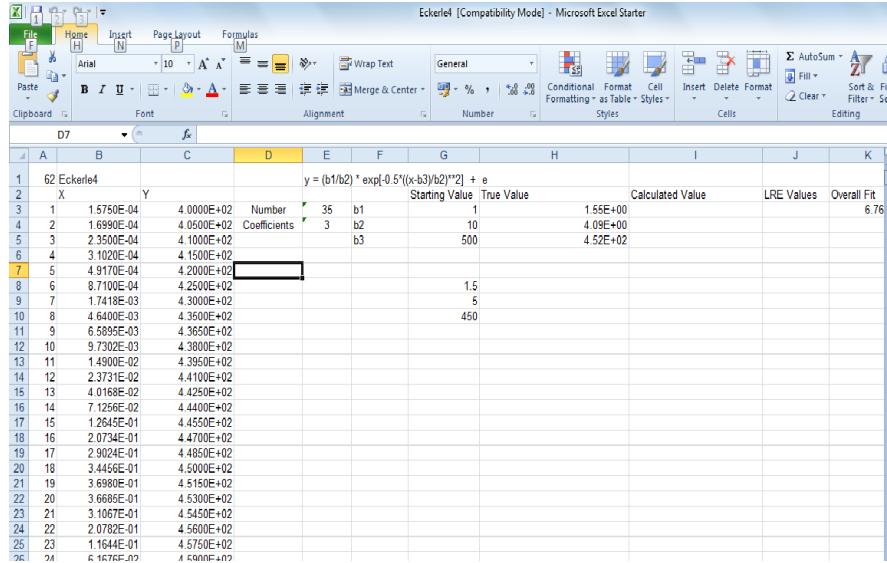
	A	B	C	D	E	F	G	H	I	J	K
1	62	Eckerle4									
2	X	Y									
3	1	1.5750E-04	4.0000E+02	Number	35	b1	1	1.55E+00	Calculated Value	LRE Values	Overall Fit
4	2	1.6990E-04	4.0500E+02	Coefficients	3	b2	10	4.09E+00			6.76
5	3	2.3500E-04	4.1000E+02			b3	500	4.52E+02			
6	4	3.1020E-04	4.1500E+02								
7	5	4.9170E-04	4.2000E+02								
8	6	8.7100E-04	4.2500E+02				1.5				
9	7	1.7418E-03	4.3000E+02								
10	8	4.6400E-03	4.3500E+02								
11	9	6.5895E-03	4.3650E+02								
12	10	9.7302E-03	4.3800E+02				450				
13	11	1.4900E-02	4.3950E+02								
14	12	2.3731E-02	4.4100E+02								
15	13	4.0168E-02	4.4250E+02								
16	14	7.1256E-02	4.4400E+02								
17	15	1.2645E-01	4.4550E+02								
18	16	2.0734E-01	4.4700E+02								
19	17	2.9024E-01	4.4850E+02								
20	18	3.4456E-01	4.5000E+02								
21	19	3.6980E-01	4.5150E+02								
22	20	3.6685E-01	4.5300E+02								
23	21	3.1067E-01	4.5450E+02								
24	22	2.0782E-01	4.5600E+02								
25	23	1.1644E-01	4.5750E+02								
26	24	6.1676E-02	4.5900E+02								
27	25	3.3720E-02	4.6050E+02								
28	26	1.9402E-02	4.6200E+02								
29	27	1.1783E-02	4.6350E+02								

Before Encryption

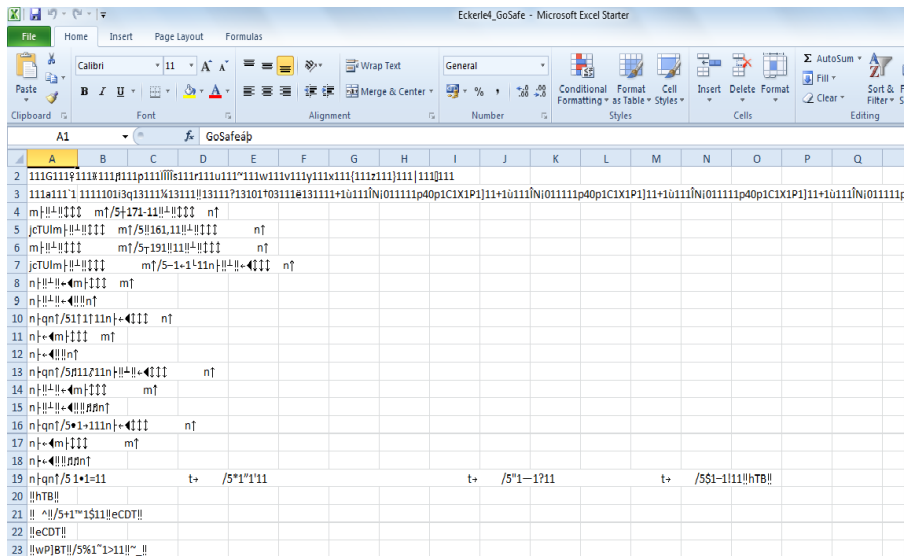
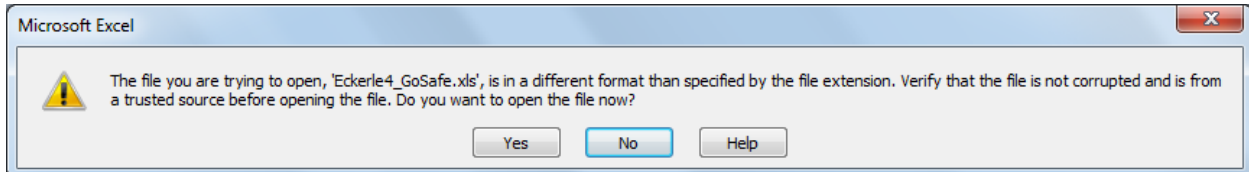


After Encryption

## .xls file:



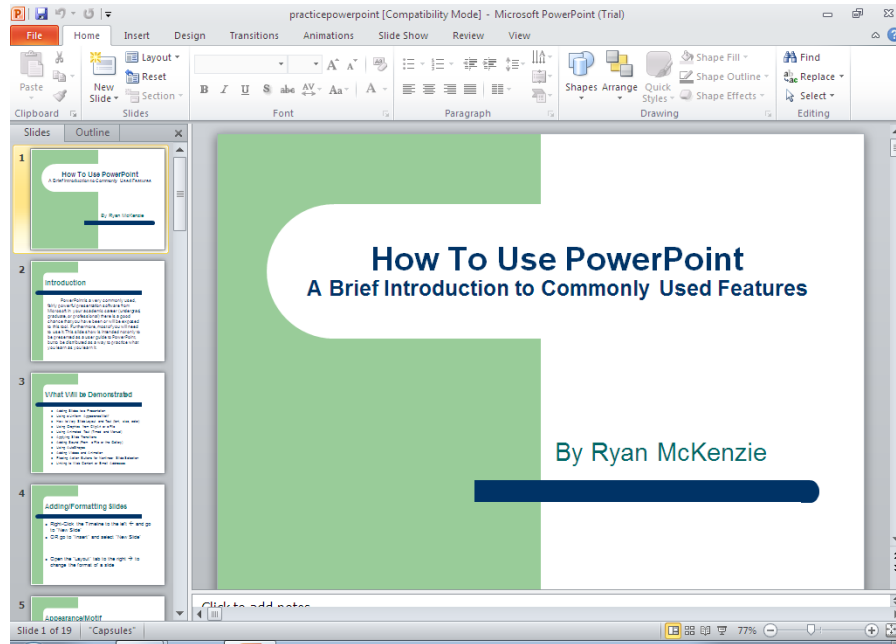
Before Encryption



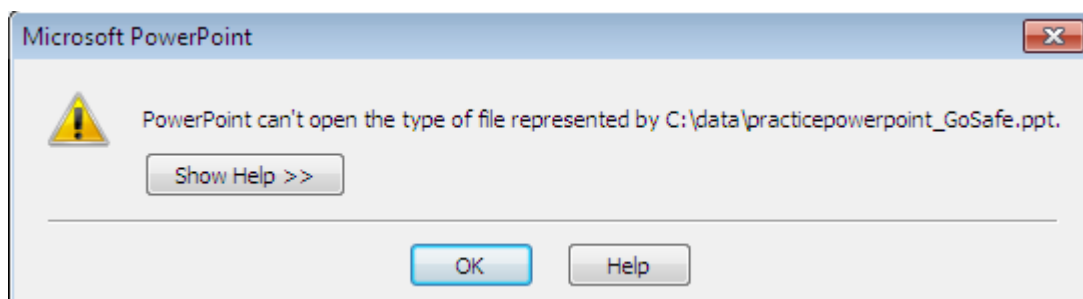
After Encryption [After error message]

## Presentation Files:

**.ppt file:**

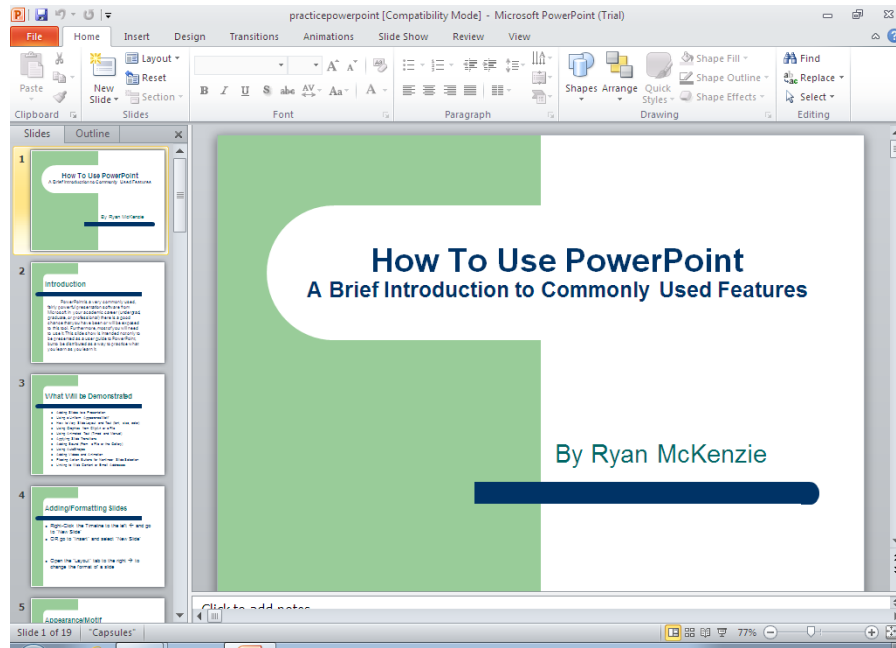


Before Encryption

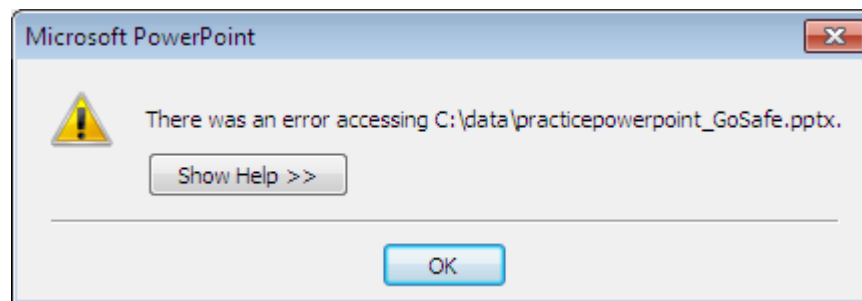
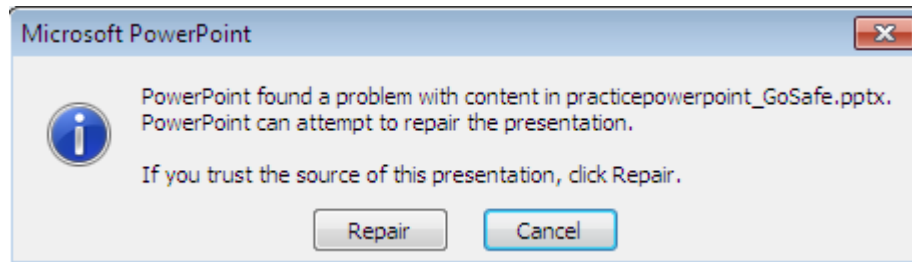


After Encryption

## .pptx file:

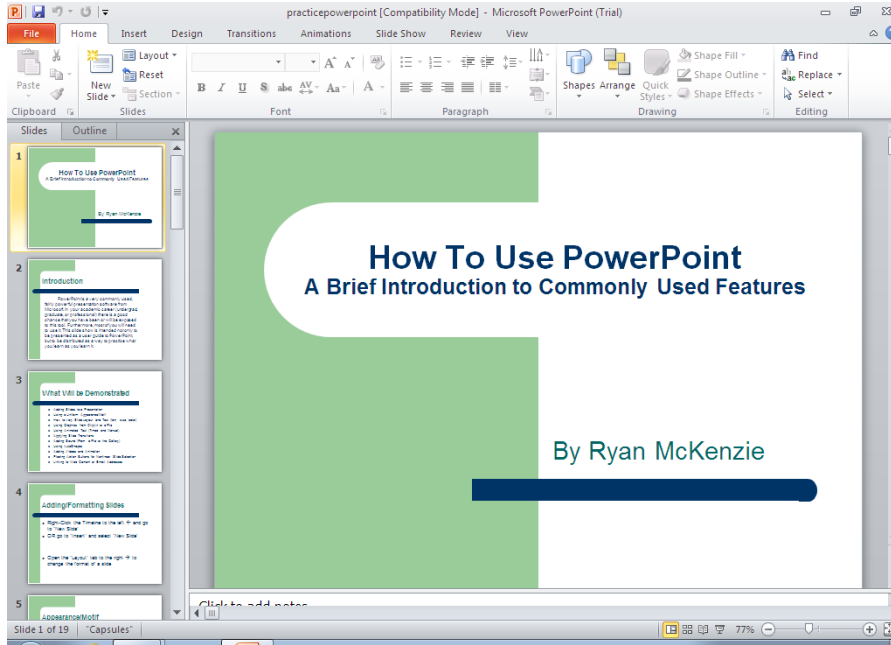


Before Encryption

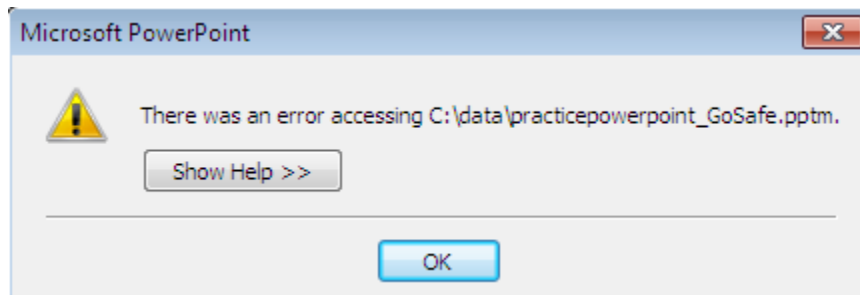
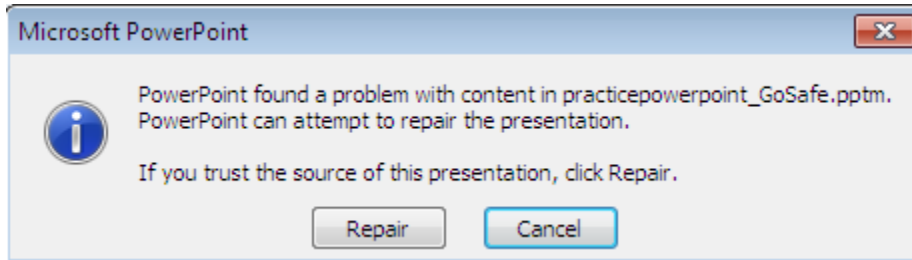


After Encryption

## .pptm file:



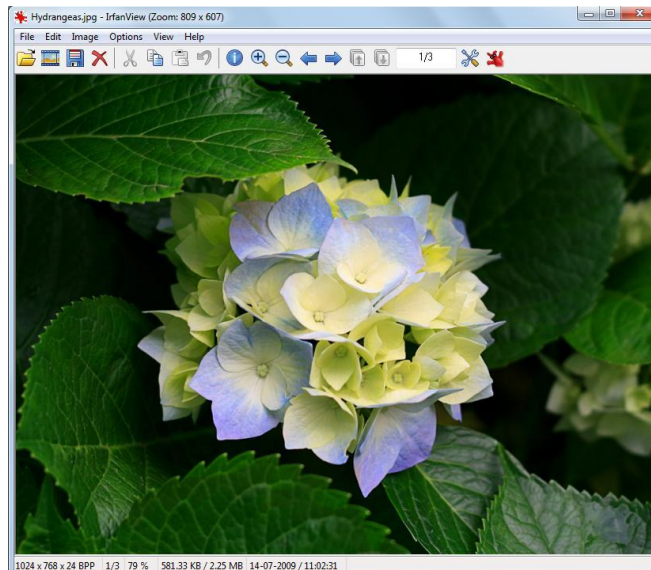
Before Encryption



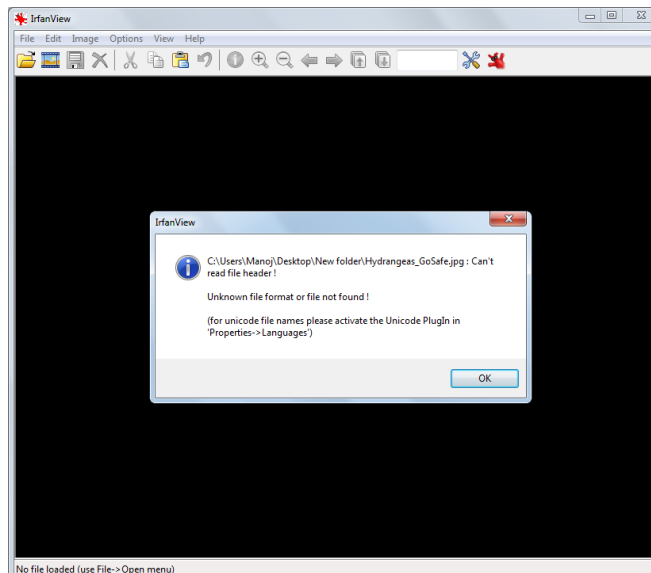
After Encryption

## Image files:

### .Jpg file:



Before Encryption

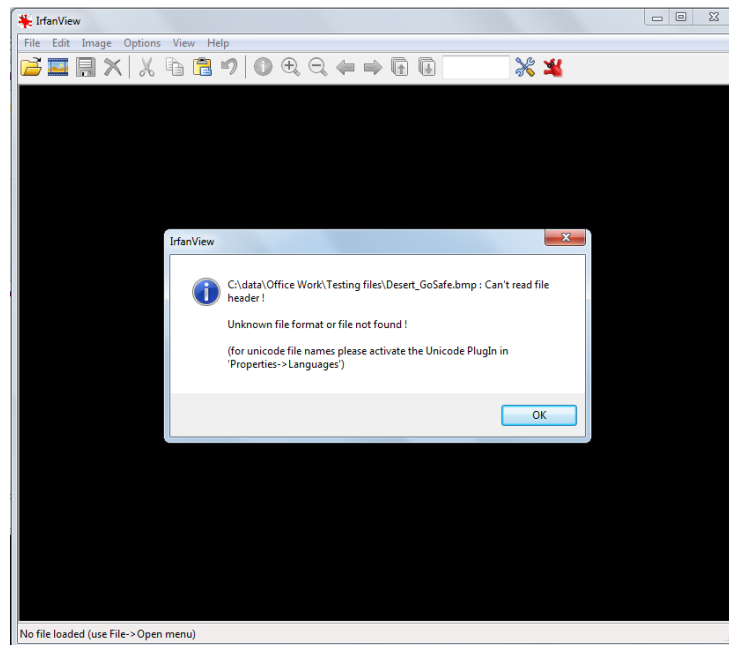


After Encryption

## .bmp file:

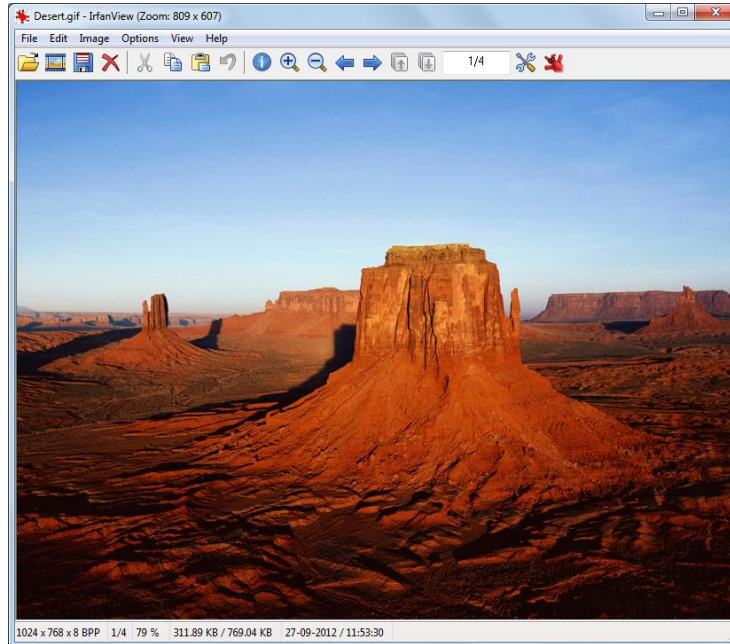


Before Encryption

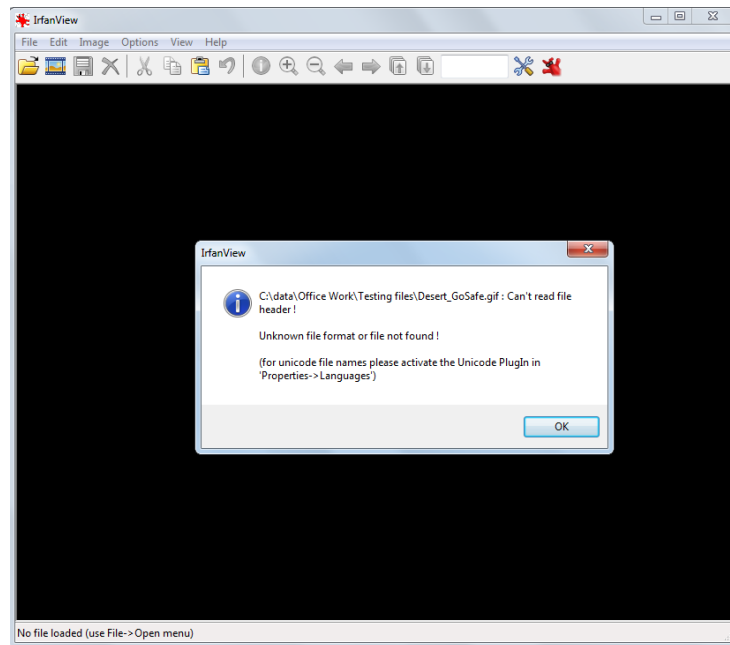


After Encryption

## .gif file:

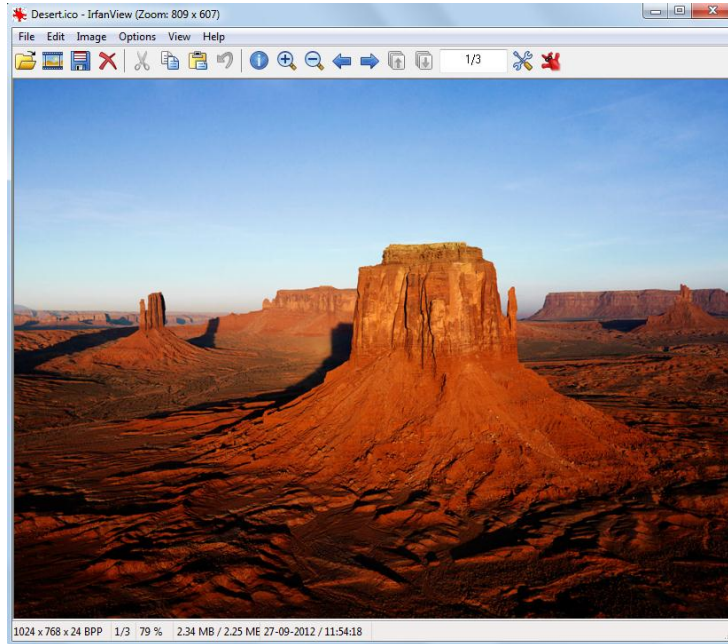


Before Encryption

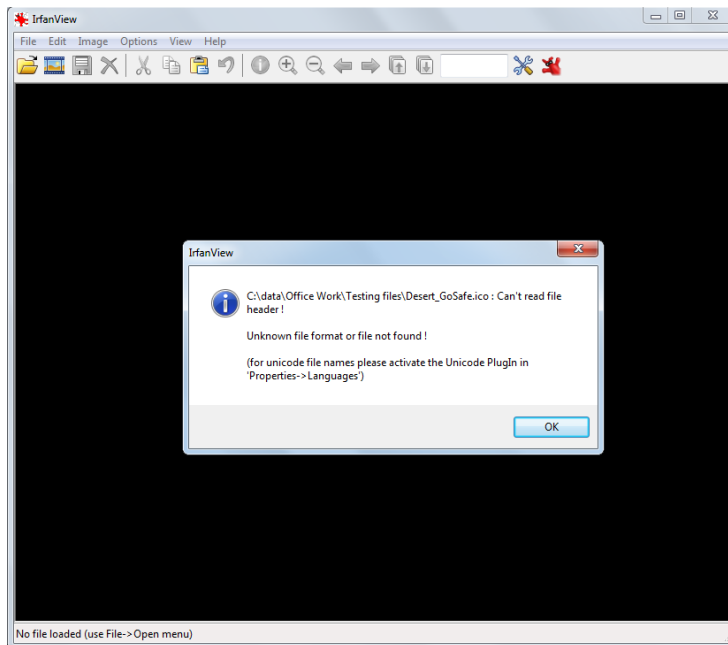


After Encryption

## .ico file:



Before Encryption

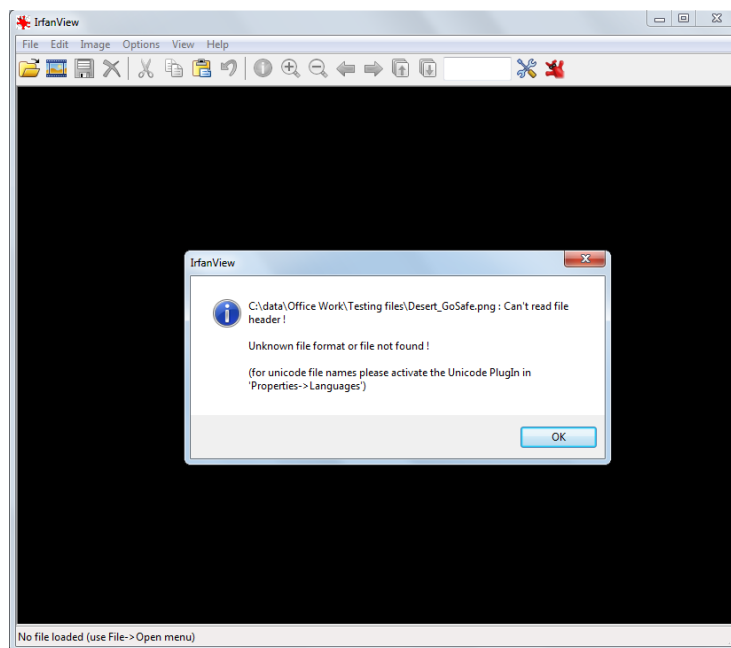


After Encryption

## .png file:



Before Encryption



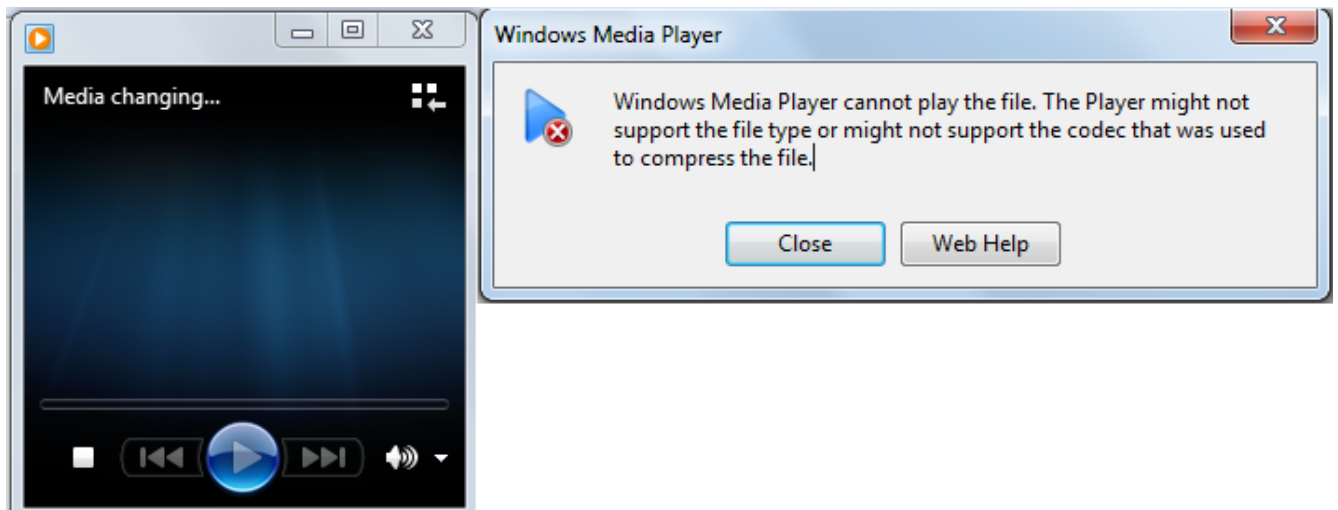
After Encryption

## Movie files:

**.wma/.wmv file:**



Before Encryption

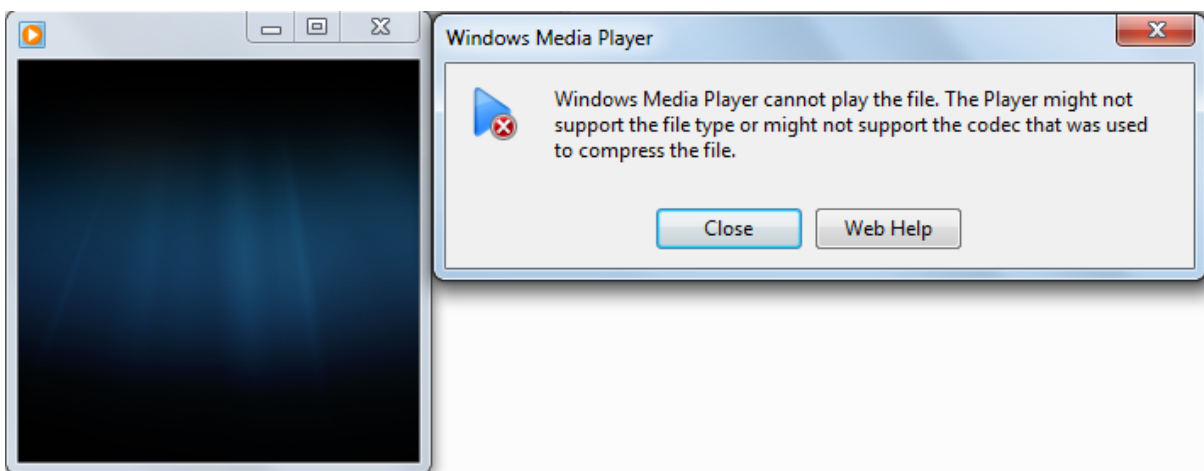


After Encryption

## Sound files: .mp3 file:



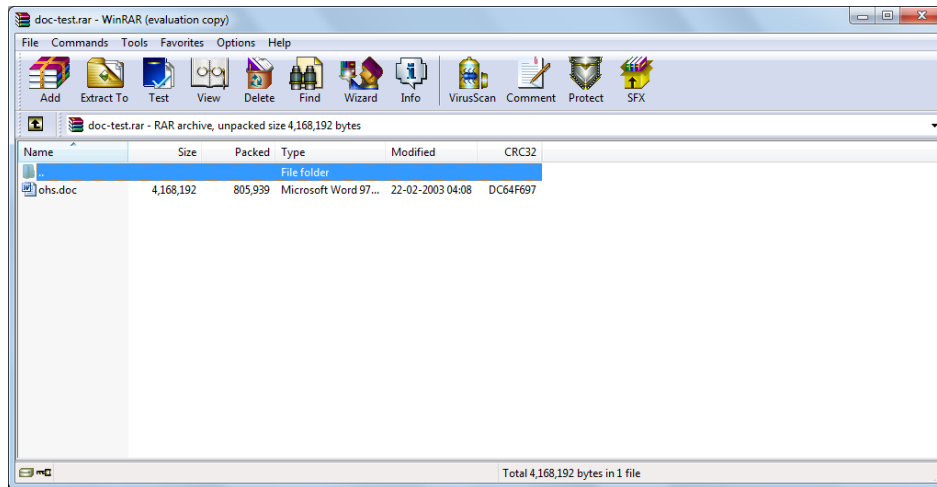
Before Encryption



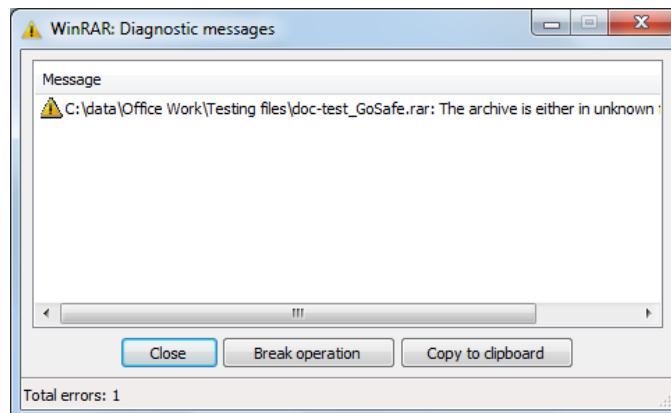
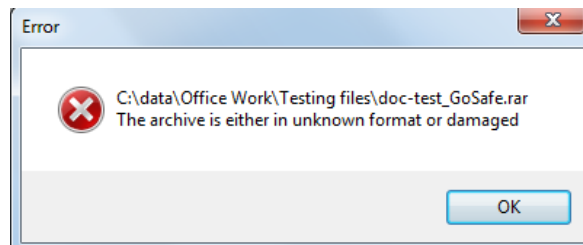
After Encryption

## Archive files:

### .rar file:

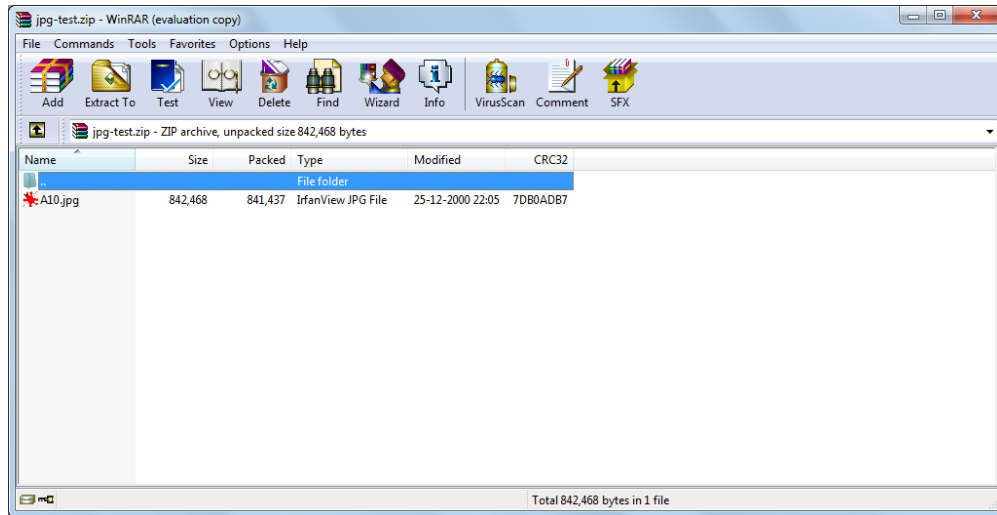


Before Encryption

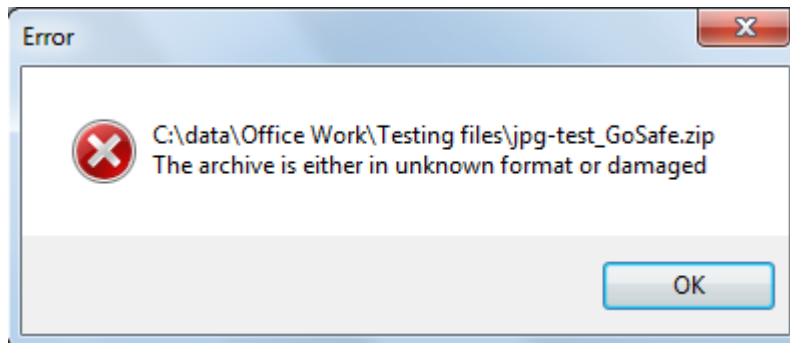


After Encryption

## .zip file:



Before Encryption



After Encryption

## Errors & Resolutions

Error Numbers	Description	Resolution
2	GoSafe Key not validated	Insert correct GoSafe Key
3	GoSafe Key not validated	Insert correct GoSafe Key
4	GoSafe Key not validated	Insert correct GoSafe Key
5	GoSafe Key not validated	Insert correct GoSafe Key
6	GoSafe Key not validated	Insert correct GoSafe Key
7	GoSafe Key not validated	Insert correct GoSafe Key
8	GoSafe Key not validated	Insert correct GoSafe Key
9	GoSafe Key not validated	Insert correct GoSafe Key
10	GoSafe Key not validated	Insert correct GoSafe Key
11	GoSafe Key not validated	Insert correct GoSafe Key
12	GoSafe Key not validated	Insert correct GoSafe Key
13	GoSafe Key not validated	Insert correct GoSafe Key
14	File operation Error	Your file is corrupt or not usable. For Vista, you can also try to run <b>GoSafe</b> as an administrator.
15	GoSafe Key not validated	Insert correct GoSafe Key