

Enveloper for Software and Data Protection

Using Pen Drive Protection

User Guide

[For Basic Edition]

Contents

	Page No
1. General	3
2. How to Download	4
3. Pre-Requisites	5
4. Application User interface	6
5. Target System	7
6. Input Files	8
7. Security Information	10
8. Output File	11
9. Error Messages while creating envelope	12
10. Error Messages while running enveloped exe	13

1. General

Software Envelope allows binding multiple files in to a single executable. The new enveloped executable is a binary file and it is very difficult to reverse engineer the file.

Normally when you use a software protection tool, you use a DLL to verify authorisation key from a hardware [it can be a dongle, USB flash drive, or any other device].

The hacker or cracker normally create an identical DLL to by-pass the functions or produces a duplicate hardware.

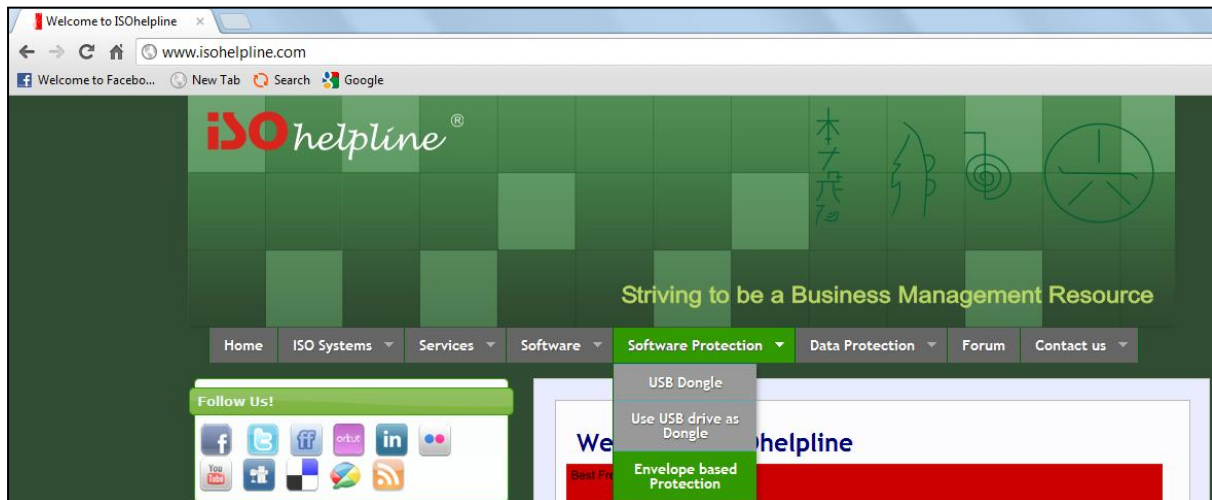
When you envelope the DLL and all other files in to a single executable, by-pass technique do not work as you have a single executable.

Envelopes can be used for one or more of following:

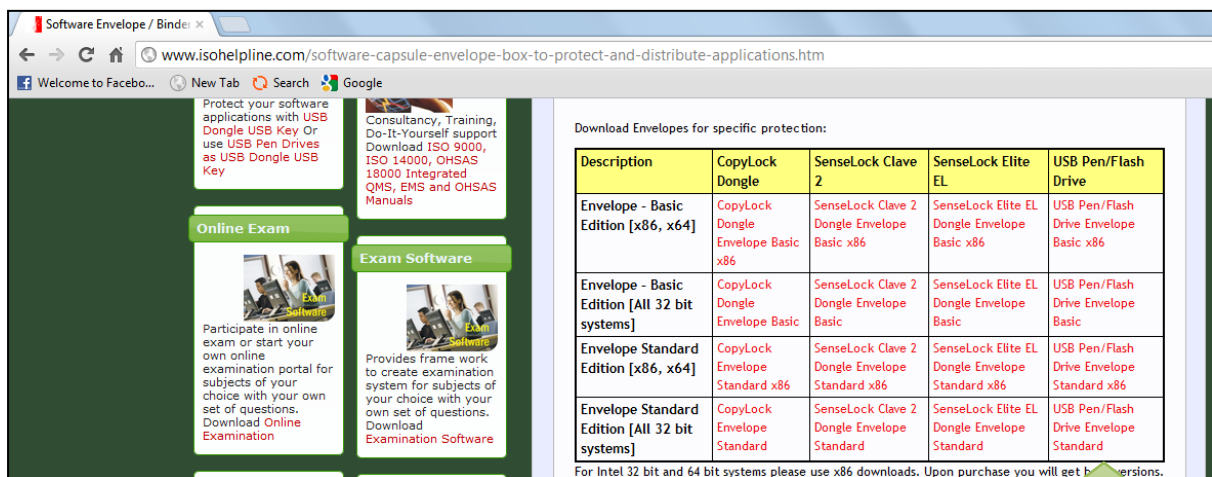
- Bind main program and DLL's together
- Bind main program and its data file [for example a PDF with PDF Reader]
- Run legacy software on advanced OS [for example a VB6 application on Vista and Win 7] by creating a single file which will not need installation
- Prevent reverse engineering of software
- Protect software with dongles / USB key or any other security tool.

Normally it is very easy to reverse engineer a .net program or any other program as disassemblers are easily available, normally free from web. Envelope will safeguard your programs from disassemblers.

2. How to Download



Go to www.isohelpline.com, click “Software Protection” >> “Envelope based Protection”



Download the envelope suitable for your system.

1. **X86, x64**
Select this option if **YOUR** Machine has Intel based CPU or compatible.
2. **All 32 bit systems**
Select this option if **YOUR** Machine has non-Intel compatible CPU (for example: AMD Processor)

Versions

Basic: Allows creating single protected EXE from an executable and [optional] a data file.

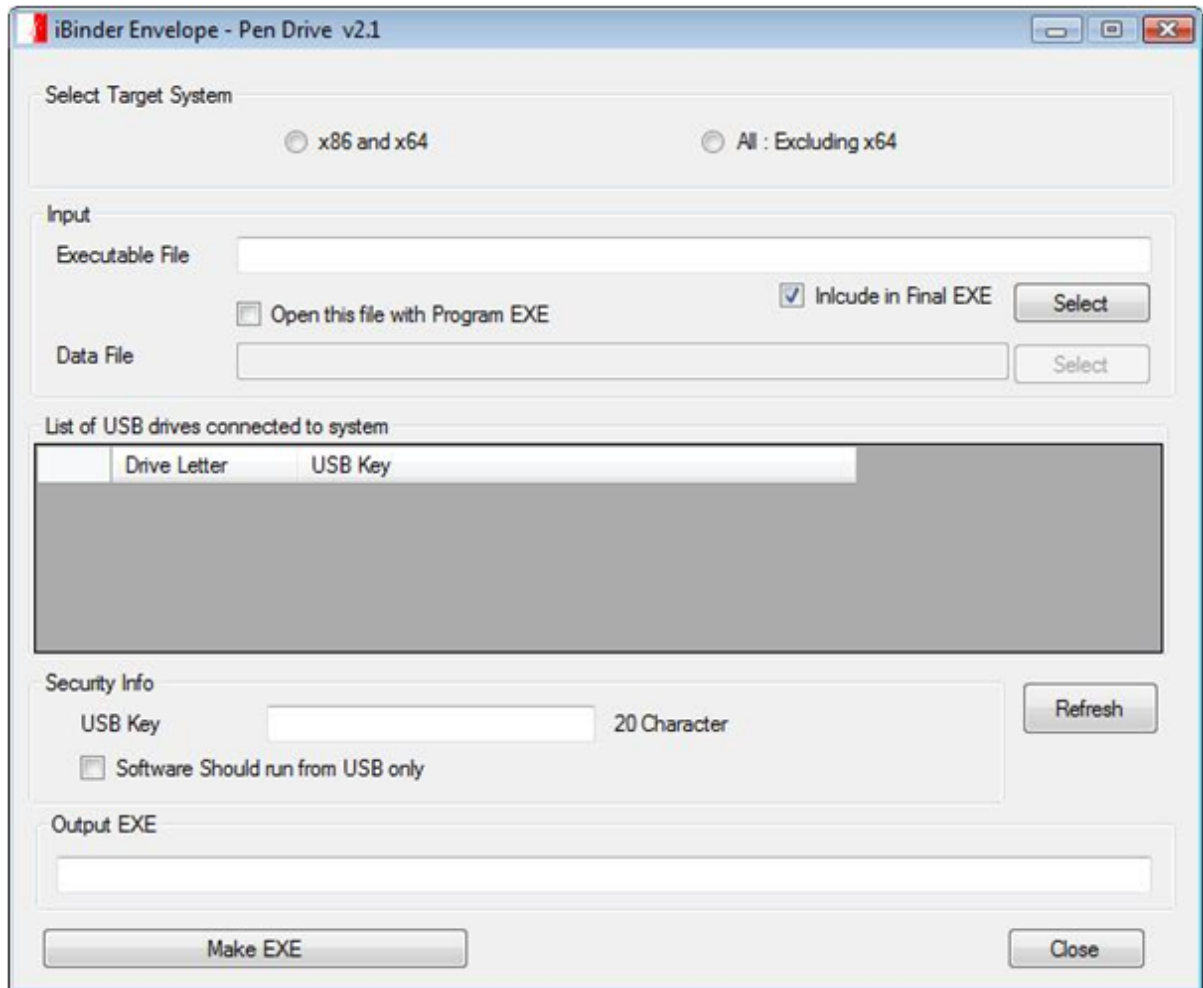
Standard: Allows creating single protected EXE from an executable, [optional] a data file and any number of other files like plug-in, DLL, COM, OCX etc.

3. Pre-Requisites

The enveloper requires Microsoft Dot Net Framework 2.0 or 4.0

The final EXE which is distributed to end user also requires Microsoft Dot Net Framework 2.0 or 4.0

4. Application user Interface



Make sure that your File path, File name and USB key should not have any Blank space.

5. Target System

Technology has given us many good things but also created complexity for programmers. A program designed for 64 bit hardware do not work on a 32 bit hardware or even a Intel hardware program do not work [or do not work efficiently] on other hardware architecture like AMD.

Our envelope will allow you to select the target system for your final executable which you will be distributing. If your existing files are designed for x86, select the same here. Please note that this will not change the target system of your existing exe but will simply create a new executable for the selected system.



- 1. X86 and x64**
Select this option if client Machine has Intel based CPU or compatible.
- 2. All : Excluding x64**
Select this option if client Machine has non-Intel compatible CPU (for example: AMD Processor)

6. Input Files

The first file must be an executable file. The envelope will run this file only. Other files will depend on this first executable and can be used from inside this application or as a link.

Guidance for Including “Executable File” in “Final EXE”:

- If the executable file is part of windows system, do not include it in the final EXE like “notepad.exe”
- If you are binding a data file and your main executable is not owned by you or you do not have distribution rights, do not include executable in final EXE.

Data File

Data file, if added will be opened as a command line operation. Your main program [executable] should support command line operation to open the file. For example:

```
C:\notepad.exe readme.txt
```

The above command will run notepad and open readme.txt file.

The screenshot shows a software interface with the following elements:

- Input Executable File:** A text field for entering the name of the executable file.
- Data File:** A text field for entering the name of a data file.
- Include in Final EXE:** A checked checkbox with a 'Select' button next to it.
- Process data file with EXE:** A checkbox.

Three callout boxes provide instructions:

- 1. Uncheck this checkbox if you don't want to bind the Executable EXE in Output EXE **Otherwise** keep it checked.** (Points to the 'Include in Final EXE' checkbox)
- 2. We can Choose Executable File with User Interface by Pressing on the Select button.** (Points to the 'Select' button)
- 3. You can also type the name of the Executable File name [if "Include in Final EXE" is unchecked] Like: Notepad.exe**
Remember that file name is case sensitive for enveloper. (Points to the 'Input Executable File' text field)

Input

Executable File: Notepad.exe

Include in Final EXE [Select]

Protect data file with EXE

Data File: [Select]

Select the data files you want to protect with this EXE by first clicking on the check box as pointed.

Input

Executable File: Notepad.exe

Include in Final EXE [Select...]

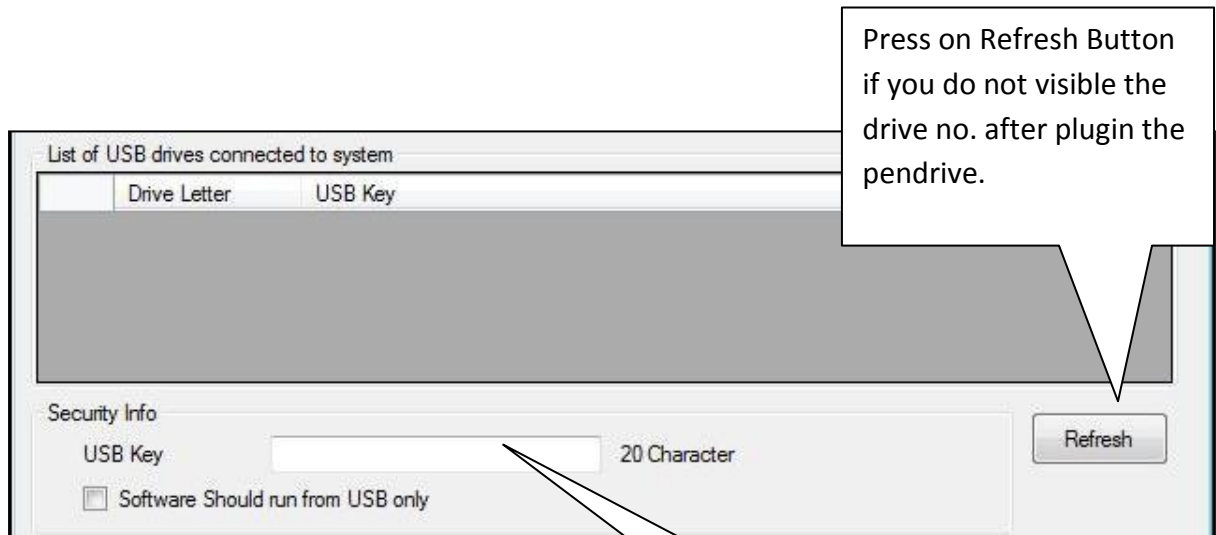
Protect data file with EXE

Data File: C:\demo\testing.txt [Select...]

After pressing on the select button open a new dialog, and then select the data file.

7. Security Information

This information depends upon the security hardware. This will ensure verification as per data specified by you.



Or
Simply type the exact drive no. of the drive for which you want to make the enveloped exe.

Select the Drive no. of the drive which will be displayed that act as a USB key.

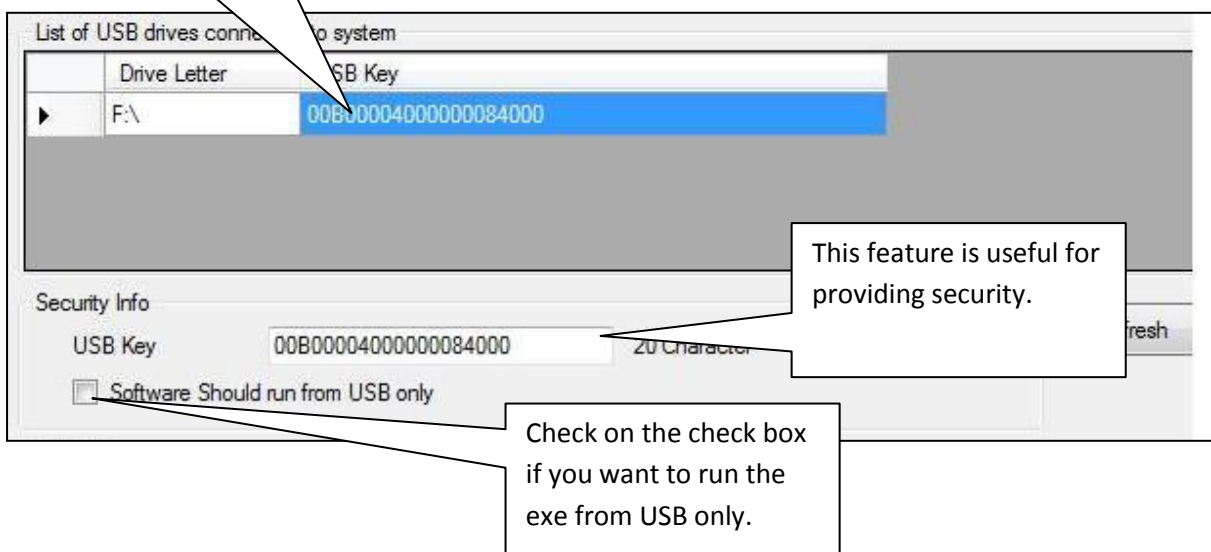
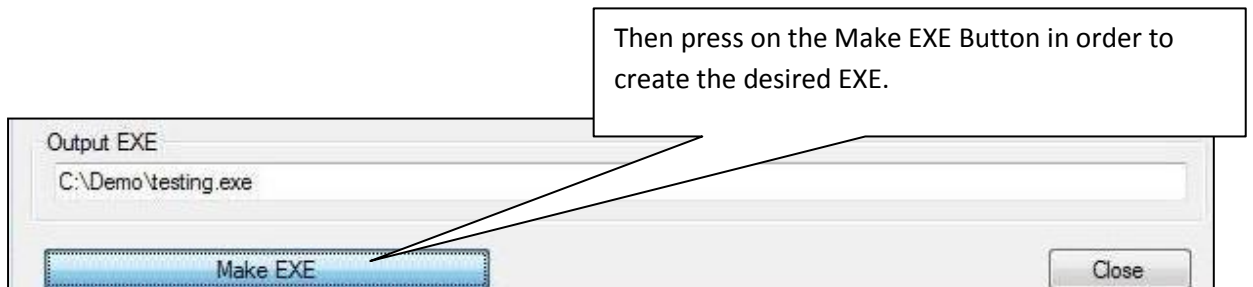
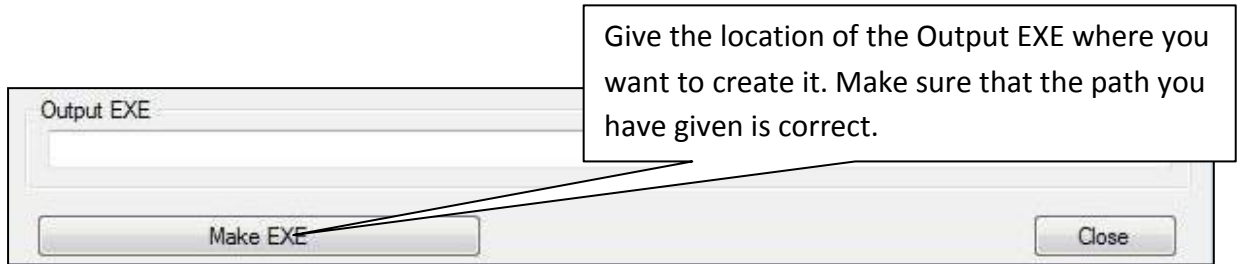


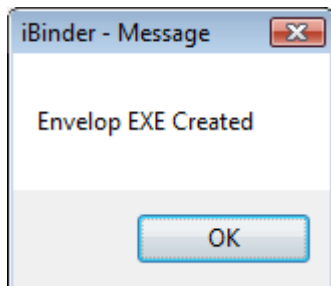
Image showing filled data

8. Output File

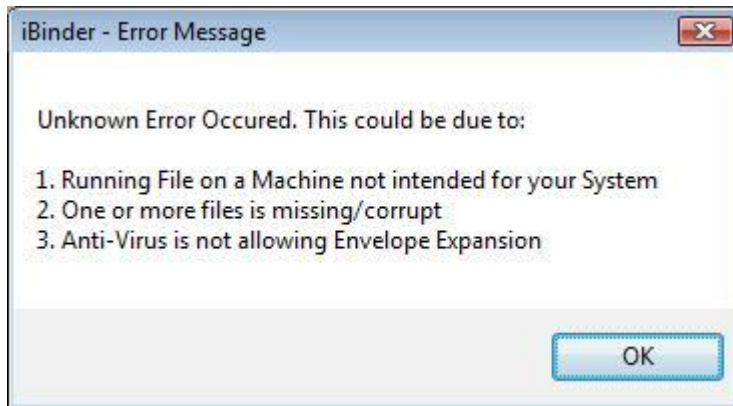
This is your final single EXE including all the files you have selected to add.
Specify the proper file location.
This file should be given to end user.



- Run the generated Enveloped EXE by just double clicking it, this EXE will work only with the particular Clave2 dongle having unique identity for providing security.



9. Error Messages while creating envelope



During envelope creation, you may encounter above error message. The resolution could be as follows:

1. Use `_x86` enveloper on Intel CPU based machines including 64 bit systems and `_all` enveloper on other CPU.
2. Make sure that files you have added are available and they are not corrupt
3. Disable anti-virus and try again
4. Copy the Program EXE in the enveloper folder [or vice versa] and try.
5. Before adding file, copy them in enveloper folder [keeping desired directory structure].

10. Error Messages while running enveloped EXE



If the user has not attached the vender supplied pen drive/flash drive while executing the EXE, this error messages may appear indicating failure of verification.

Please contact us for purchasing SenseLock Dongle:

Innovative Matrix Softech Pvt. Ltd.

Door No. 7005, 7th Floor, Emerald House
1-7-264 Kalasiguda
Near Paradise Circle
Sarojini Devi Road
Secunderabad - 500 003
India.

Phone: 040 32518777

Mobile: 91.93485 18777

Email: mail@isohelpline.com

Website: www.isohelpline.com